



WEDGE CONNECTOR WITH GROUNDING RINGS

B 610

B610 Wedge connector CRC

PRODUCT DESCRIPTION:

CRC-x a/b

CRC : CROP C Connector ; x: Type Number of C body

a: Main conductor in mm² , b: Tap conductor in mm²

The "C-Ring" and wedge Connector are used to connect solid and stranded aluminum, aluminum alloy and stranded aluminum composite conductors including AAC, AAAC, ACSR, ACAR, AW, ACSR/AW, and ACSS. They may also be used in non-corrosive environments to connect copper conductors.



B615

Cover for CRC
Code: JXL

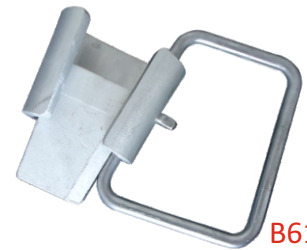


CRC-1, CRC-2



B611

Ring12 for CRC-1, CRC-2



B611

Ring34 for CRC-3, CRC-4

USED MATERIALS:

Aluminum Alloy , Polystyrene Cover, Aluminum ring or copper tinned ring.

Undergrounding ring : diameter 10mm

VARIANTS:

The product is manufactured and supplied in modifications as following page.

Special range can be required.

STORAGE AND TRANSPORT:

Product do not have any specific storage requirements. Its is fire resistant and non-hazardous.

ACCESSORIES FOR YOUR CHOOSE IF YOU NEED:

- * **Undergrounding Rings** for your choose: **Ring12** for CRC-1 and CRC-2, **Ring34** for CRC-3 and CRC-4;
- * **Plastic cover** for your choose : **JXL12** for CRC-1 and CRC-2, **JXL34** for CRC-3 and CRC-4;
- * **Rubber cover** for your choose: **JXR12** for CRC-1 and CRC-2, **JXR34** for CRC-3 and CRC-4;
- * **IP67 Cover** for water sensitive connections: **MBX1** for CRC-1 and CRC-2; **MBX3** for CRC-3 and CRC-4;

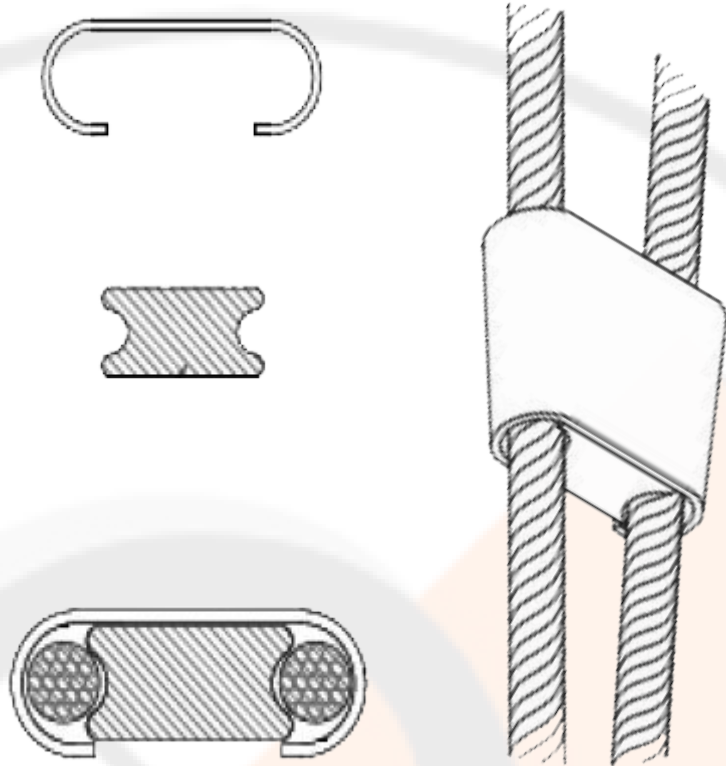
WEDGE CONNECTOR WITH GROUNDING RINGS



B610 Wedge connector CRC

Each XX shall be replaced by conductor type:

Main Conductor	Derivate Conductor	(RC) - ACSR/AAAC					(RR) - ACSR/ACSR			(CC) - AAAC/AAAC		(XX) - XLPE/XLPE	
		16	25	35	50	70	70	95	120	150	185	240	
16	CRC-1	CRC-1 16/16 XX	CRC-1 25/25 XX	CRC-1 35/35 XX	CRC-1 50/50 XX	CRC-1 70/70 XX	CRC-1 95/95 XX	CRC-1 120/120 XX	CRC-2 150/150 XX	CRC-3 185/185 XX	CRC-4 240/240 XX		
25	CRC-1	CRC-1 25/16 XX	CRC-1 25/25 XX	CRC-1 35/35 XX	CRC-1 50/50 XX	CRC-1 70/70 XX	CRC-1 95/70 XX	CRC-1 120/70 XX	CRC-2 150/95 XX	CRC-3 185/150 XX	CRC-4 240/185 XX		
35	CRC-1	CRC-1 35/16 XX	CRC-1 35/25 XX	CRC-1 35/35 XX	CRC-1 50/35 XX	CRC-1 70/35 XX	CRC-1 95/35 XX	CRC-1 120/35 XX	CRC-2 150/50 XX	CRC-3 185/50 XX	CRC-4 240/185 XX		
50	CRC-1	CRC-1 50/16 XX	CRC-1 50/25 XX	CRC-1 50/35 XX	CRC-1 50/50 XX	CRC-1 70/50 XX	CRC-1 95/50 XX	CRC-1 120/50 XX	CRC-2 150/70 XX	CRC-3 185/70 XX	CRC-4 240/185 XX		
70	CRC-1	CRC-1 70/16 XX	CRC-1 70/25 XX	CRC-1 70/35 XX	CRC-1 70/50 XX	CRC-1 70/70 XX	CRC-1 95/70 XX	CRC-1 120/70 XX	CRC-2 150/95 XX	CRC-3 185/95 XX	CRC-4 240/185 XX		
95	CRC-1	CRC-1 95/16 XX	CRC-1 95/25 XX	CRC-1 95/35 XX	CRC-1 95/50 XX	CRC-1 95/70 XX	CRC-1 95/95 XX	CRC-1 120/95 XX	CRC-2 150/120 XX	CRC-3 185/120 XX	CRC-4 240/185 XX		
120	CRC-1	CRC-1 120/16 XX	CRC-1 120/25 XX	CRC-1 120/35 XX	CRC-1 120/50 XX	CRC-1 120/70 XX	CRC-1 120/95 XX	CRC-1 120/120 XX	CRC-2 150/150 XX	CRC-3 185/150 XX	CRC-4 240/185 XX		
150	CRC-2	CRC-2 150/16 XX	CRC-2 150/25 XX	CRC-2 150/35 XX	CRC-2 150/50 XX	CRC-2 150/70 XX	CRC-2 150/95 XX	CRC-2 150/120 XX	CRC-2 150/150 XX	CRC-3 185/150 XX	CRC-4 240/185 XX		
185	CRC-3	CRC-3 185/16 XX	CRC-3 185/25 XX	CRC-3 185/35 XX	CRC-3 185/50 XX	CRC-3 185/70 XX	CRC-3 185/95 XX	CRC-3 185/120 XX	CRC-3 185/150 XX	CRC-3 185/185 XX	CRC-4 240/185 XX		
240	CRC-4	CRC-4 240/16 XX	CRC-4 240/25 XX	CRC-4 240/35 XX	CRC-4 240/50 XX	CRC-4 240/70 XX	CRC-4 240/95 XX	CRC-4 240/120 XX	CRC-4 240/150 XX	CRC-4 240/185 XX	CRC-4 240/240 XX		
300	CRC-4	CRC-4 300/16 XX	CRC-4 300/25 XX	CRC-4 300/35 XX	CRC-4 300/50 XX	CRC-4 300/70 XX	CRC-4 300/95 XX	CRC-4 300/120 XX	CRC-4 300/150 XX	CRC-4 300/185 XX	CRC-4 300/240 XX		



MATERIAL:
WEDGE CONNECTOR : ALUMINUM ALLOY
RING : ALUMINUM ALLOY OR COPPER TINNED



CRC-TU